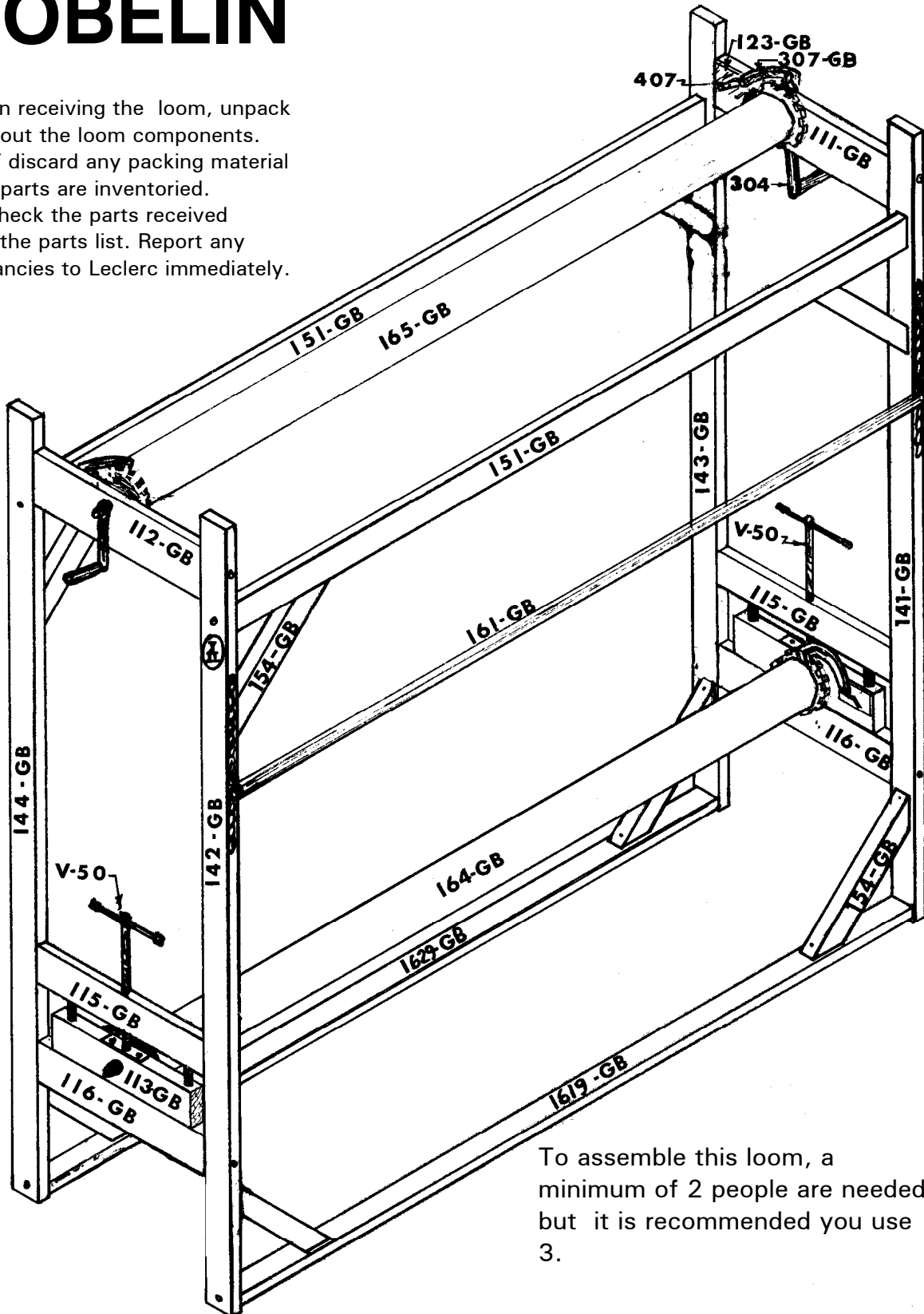


# GOBELIN

On receiving the loom, unpack and lay out the loom components. Do NOT discard any packing material until all parts are inventoried.

Check the parts received against the parts list. Report any discrepancies to Leclerc immediately.



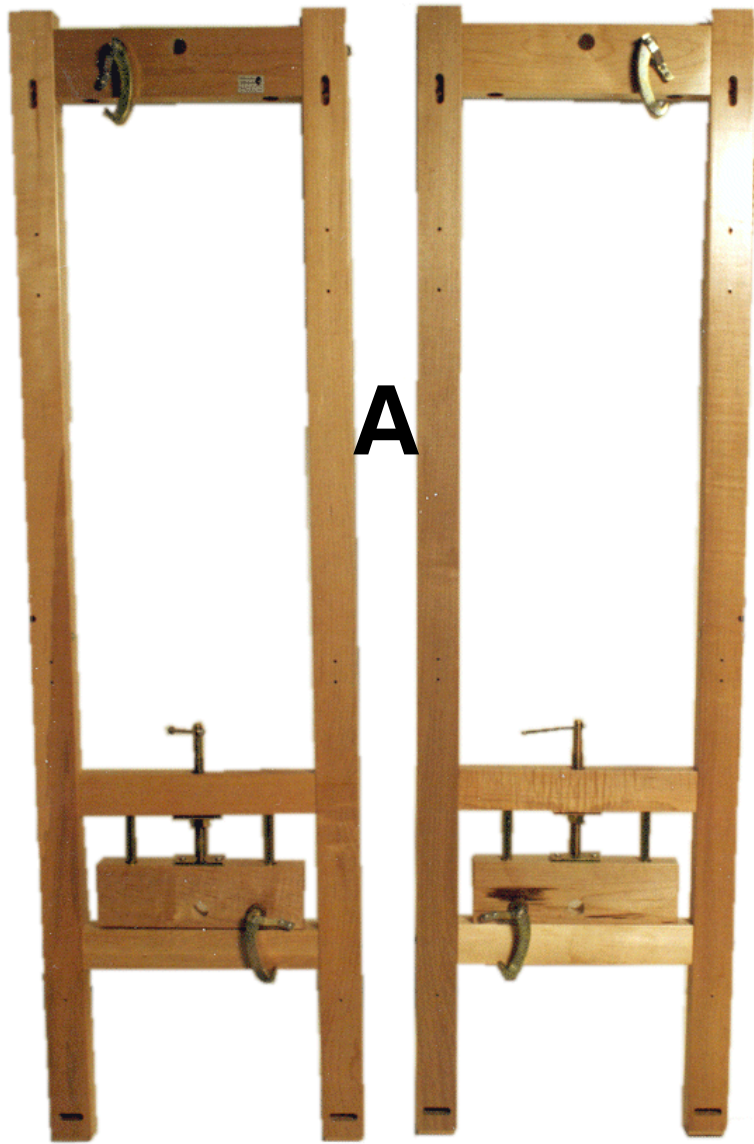
To assemble this loom, a minimum of 2 people are needed but it is recommended you use 3.

Loom Prepared by: \_\_\_\_\_

Inspected by: \_\_\_\_\_

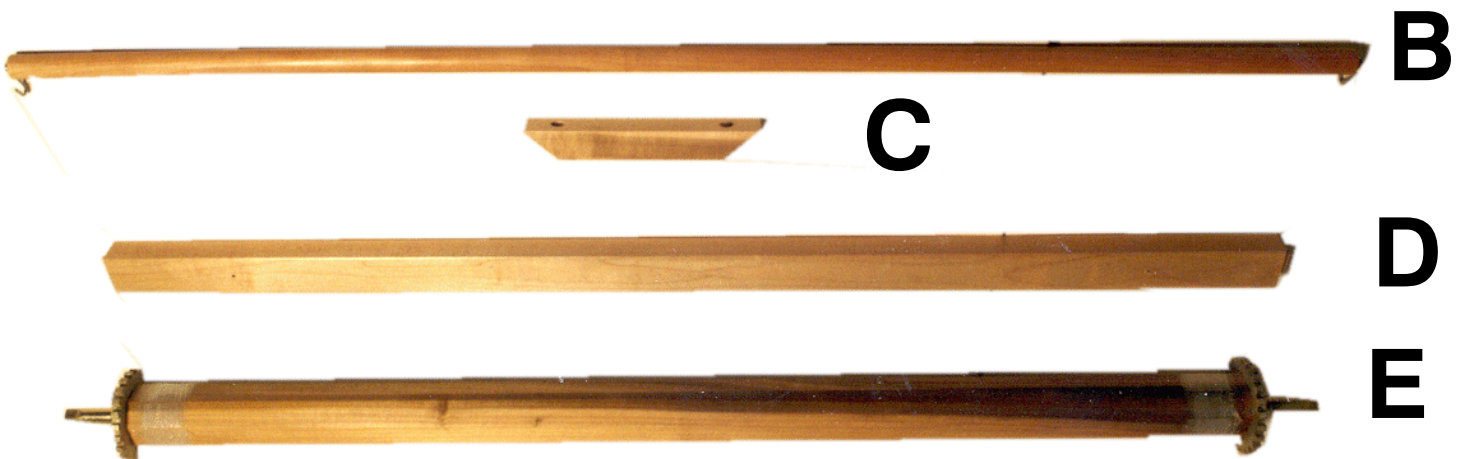
Date: \_\_\_\_\_



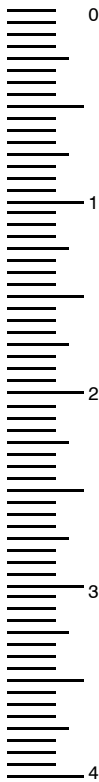


## Parts List:

- A= Loom end frames
- B= 1 Leash heddle support (161-GB)
- C= 8 Strengthening pieces (154-BG)
- D= 2 Upper cross-members (note: holes to fix Strength. pieces are under the piece, refer to the first page drawing)  
2 Lower cross-members (note: holes to fix strength. pieces are in the top of the wood piece. If the loom has a shaft kit, holes for treadle set are for front cross-member)
- E= 2 Warp beams (Gobelin 36" and 45" have only one ratchet wheel per warp beam)



# PARTS LIST "GOBELIN"



Machine bolts

8X - 3/8" x 5"

Square nuts

8X - 3/8"

Washers

8X - 3/8"

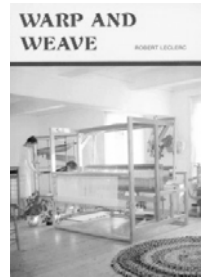
1 Wood tapestry bobbin  
1 doz. styrene bobbins

Round head screw

16X - #14 x 2"



1 Black no 3 screwdriver



1 Book "I Weave you Weave"  
1 Book "Warp & Weave"



1 Aluminum Wrench

2 cords 10 yds



1 crank handle (36" and 45" loom)  
2 crank handles (60" loom)

1 instruction DVD Video showing all stages of installation.

# GOBELIN LOOM ASSEMBLY:

Place the 2 End Frames (mortises inside) face to face (chain in the top).

Identify and prepare all middle parts respecting the labels on each piece.

Cloth Beam (165 GB) (Top)

Warp Beam (164 GB)

Before inserting beams, be sure that ratchet pawls are on top of ratchet wheels

Front and back top cross-member (151GB) (small holes facing down)

Front bottom cross-member (1619-GB) (small holes facing up)

Back bottom cross-member (1629-GB) (small holes facing up)

Assemble it and fix it using the 8 Machine screws 5" x 3/8", washers 3/8" and square nuts 3/8"

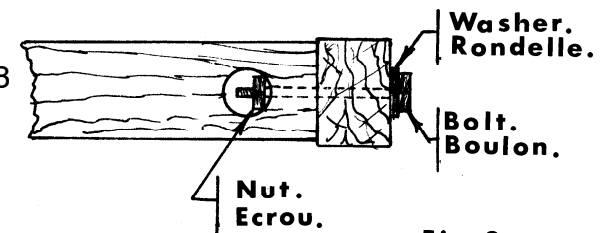


Fig. 2

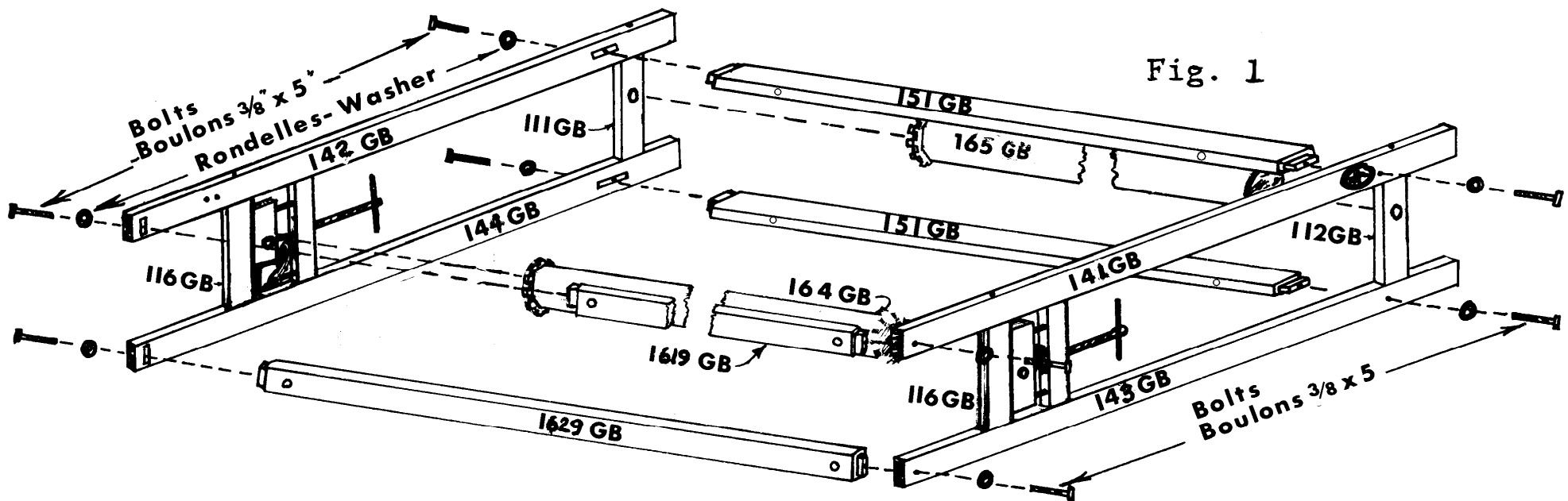
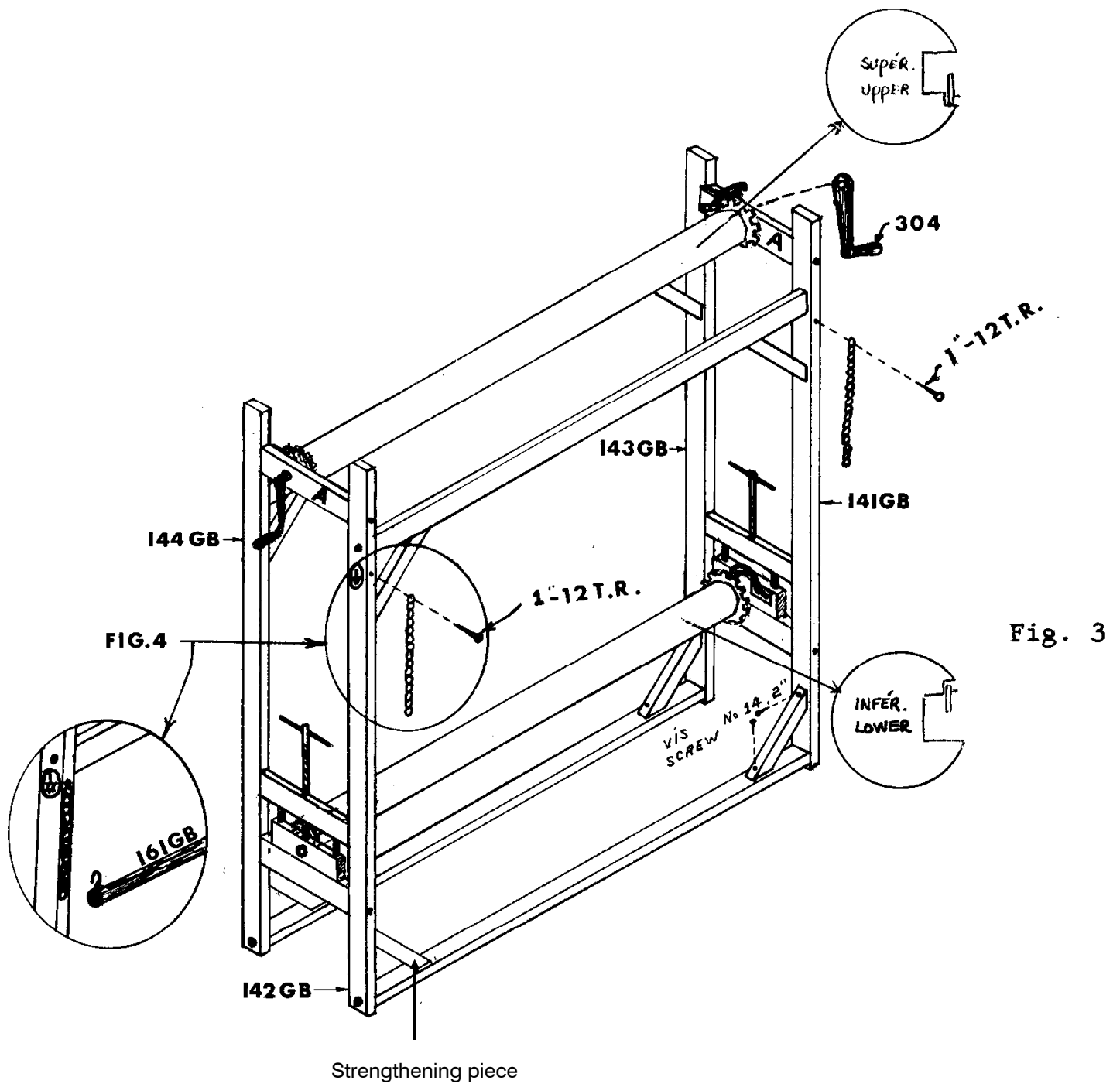


Fig. 1



Put the loom in its normal position.  
 Using the round-headed screws #14, 2" (50mm) affix the 8 wooden Strengthening pieces.  
 The chains have been installed in our shop so you can hook the Leash heddle support (161-GB) to the chain at a convenient height for the seated weaver.

The loom is now ready to be warped.

## MOUNTING THE HIGH WARP LOOM

### Material:

- Cord no 12 for the sheaves
- Cord no 15 for the heddle
- Warper (same as used for a low warp loom, but warp one thread at a time) .

N.B.: - Divide your warp in many sections (sheaves) and make sure that you have the same tension on each warp thread.

### Dimensions of the tapestry to weave:

The vertical tapestry is woven horizontally.

The horizontal tapestry is woven vertically.

### Length of the sheaves:

For 115 and 150 cm (45" and 60" looms):

Calculate the length of the tapestry you want to make plus 60 cm (24") .

For 2.5m (8 feet) looms and more:

Calculate the length of the tapestry you want to make plus 90 cm (36") .

### Shrinkage:

Add 13 mm ( $\frac{1}{2}$ " ) per 30 cm (12") for the width of the tapestry as well as the height.

Example: A 122 cm (48") wide tapestry x 90 cm (36") high.

### Number of sheaves:

Example: Number of threads per cm or inch to be determined following the size of the cord or thread used for the warp.

Put 3 threads per centimeter (8 threads per inch) if the work should be woven with three wools .

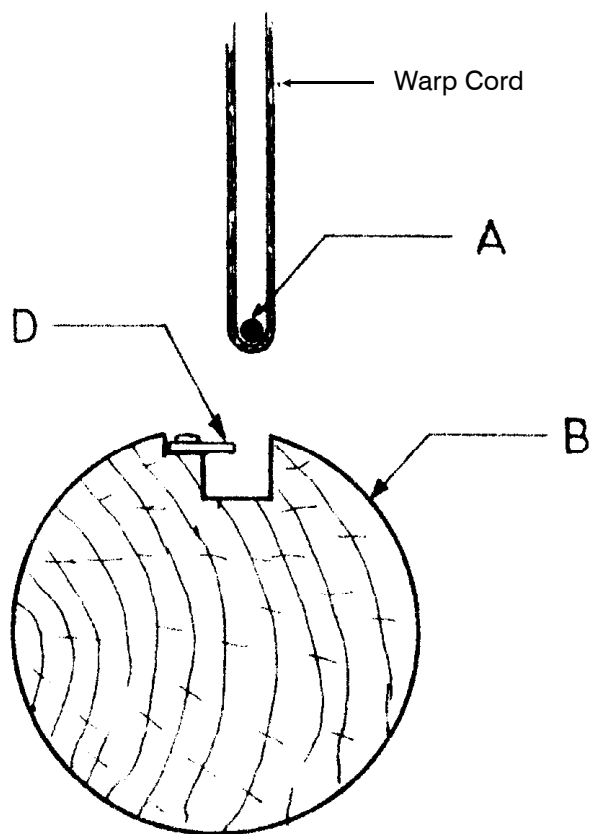
Calculate the width of the tapestry plus 13 mm ( $\frac{1}{2}$ " ) per 30 cm (12") for the shrinkage. Multiply this number by 3 (3 threads per centimeter) by 8 (8 threads per inch) and divide it by 2 as in one turn you obtain two threads. The result divided by 20 (as for a sheaf we make 20 turns) will give you the number of sheaves to make. It is good to put some more threads (as 4) on each side; they will stay out of the tapestry and will guide the regularity of the selvages.

Example:  $(122 \text{ cm} + 5 \text{ cm}) \times 3 \div 190 \div 20 = 9\frac{1}{2}$  sheaves  
 $(48 \text{ " } + 2 \text{ " } ) \times 8 \div 200 \div 20 = 10$  sheaves

### How to make the sheaves:

Use a strongly built warping frame. As much as possible, the same person should make all sheaves and on the same day, so the tension is always the same. Always make knots at the same end of the warper. Attach the cord to the warper's peg, count the threads at the opposite side of the knots (20 turns) . When you make the last turn, attach the cord to the warper's peg. Put sticky paper (2 at each end) on both sides of the peg about 30 cm (12") apart and one at the center on each side of the sheaf.

All sheaves must be exactly equal in length and threads of a same sheaf should have the same tension.



#### Mounting the loom.

Take off the iron or wooden stick from the warp beam and place it on chairs in front of the loom.

Hang up all sheaves on the upper iron bar (the part of the sheaves with knots). Replace the iron bar in the groove of the upper beam. Put the other end of the sheaves on the iron bar of the lower beam.

If the beams of your loom are provided with iron rods necessary to attach the ends of the warp, there are two possibilities to keep the metal rod inside the beam.

- 1) Attach a strong cord around each beam end and use adhesive tape at the center, if necessary;
- 2) Stuff the beam hole with paper to secure the iron rod under "D" latches.

Before putting tension on the warp, turn beam so the tension is not on the latches "D".

## How to make the heddle:

The heddle should be made under the cross stick. Attach the cord to the heddle cross bar, push the first front thread towards the left, take the back thread (from the right to the left), bring back the roller of cord in a way to form a loop; pass the roller of cord over the heddle cross bar. Pass round the loop with the roller of cord by passing under it, hold the cord that goes to the roller of cord with the right hand and make a knot by passing the roller of cord between the last loop and the cord that you hold; tighten the knot with the right hand and hold the end of the loop with the left hand to have a regular heddle. This is the first heddle.

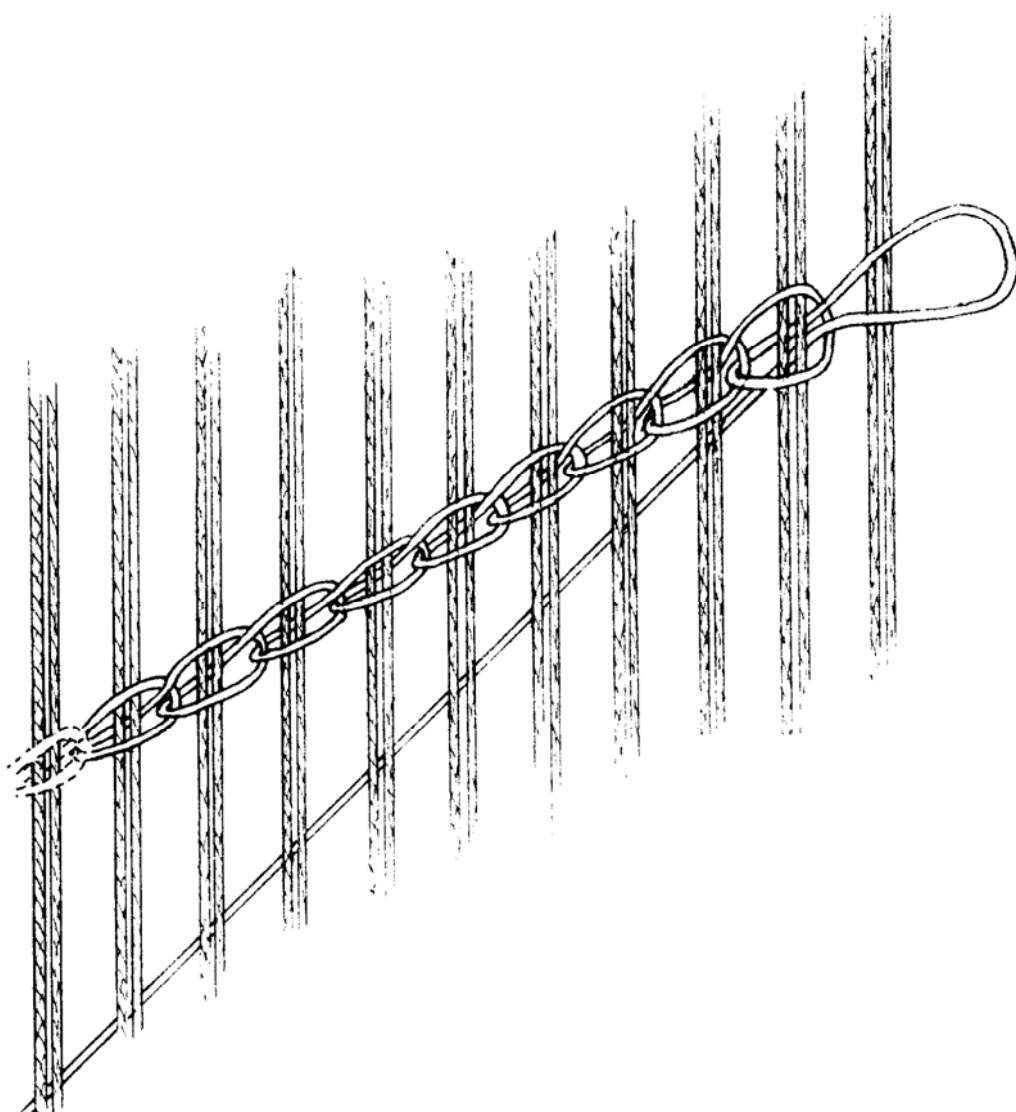
Repeat the same for each thread, but instead of passing round the loop, pass the roller of cord at the center of the preceeding loop. When the last loop is made, attach the cord to the heddle cross bar.

From the beginning, take great care, as an error could require you to start the heddle again.

The heddle will last longer if the loops are long.

Take off lower sticky papers and spread the threads evenly (3 threads per centimeter or 8 threads per inch). Always begin by the center.

Make two regularization chains to keep the tapestry warp cords in place taking care to put two corresponding threads in each stitch, that is to say the front and the back threads. Slide one regularization chain towards the lower part of the loom to begin weaving





## Advancing the fabric

When you wish to advance your warp, unscrew the tension screw(s) of the cloth beam.  
Take off the upper ratchet pawl(s).  
Hold the warp in place with the crank.  
Roll the cloth beam .  
Put back the top pawl(s) in place.  
Put light or medium tension on the warp with the cloth beam crank.  
Complete the tension using the 2 tension screws.

For more information on how to make the warp or how to weave a tapestry, refer to the 2 books supplied with the loom.

**We at Leclerc encourage Weaver feedback on this and all our products. Please send your comments to Leclerc Loom Co.**

# Leclerc Looms

Since 1876



1573 Savoie  
C. P. 4  
Plessisville, Qc.  
G6L 2Y6

TEL: 819-362-7207  
FAX: 819-362-2045  
info@leclerclooms.com  
www.leclerclooms.com