

Table of Contents

Which Printing Do I Have?	2
Jamieson's Shetland Knitting Book - 1st Printing - Errata - January 29, 2004	3-5
Jamieson's Shetland Knitting Book - 2nd Printing - Errata - January 29, 2004	6
Jamieson's Shetland Knitting Book - 3rd Printing - Errata - January 29, 2004	7
Jamieson's Shetland Knitting Book - 4th Printing - Errata - January 29, 2004	8

Which Printing Do I Have?

Jamieson's Shetland Knitting Book has been printed 4 times. Look for the markers at the bottom of page 4, which indicate which printing you have:

1st Printing: No marker (not yet implemented)

2nd Printing: No marker (not yet implemented)

3rd Printing: 3 4 5 6 7 8 9 10

4th Printing 4 5 6 7 8 9 10

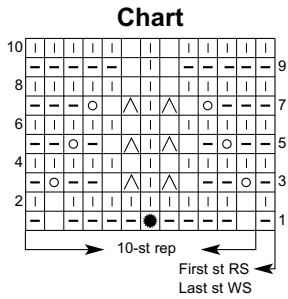
For the 1st and 2nd Printings, check errata pages against your book to see if the corrections are made. We apologize for the inconvenience.

Jamieson's Shetland Knitting Book - 1st Printing

Errata - January 29, 2004

Bobble Shirt

The following chart replaces the chart on Page 11.



Wrixlan Jacket

Under **Measurements** on Page 12 (and on the garment schematic on page 15), **Width at Underarm** should read: 20 (29)".

On Page 14, the 2nd paragraph should read:

Complete Dec and End Cables B, C and D

Next Row (WS): Continuing Charts A and E as set, work Chart E over the first 6 sts, k2; purl to last 8 sts, dec'g 1 st in center of each occurrence of Chart B; k2, work Chart A over the last 6 sts (214 (306) sts rem).

St. Ninnian

The **Foundation Row** for the **2nd Size** should read:

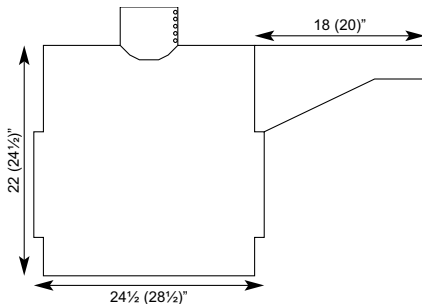
2nd Size: k2, *([p3, k1] twice), p3, k2, p8, k2**; rep from * to ** 4 times; end ([p3, k1] twice), p3, k2.

On Page 28, **Row 2** for the **1st Size** should read: **1st Size:** k2; work Chart A; *work Chart B; ([work Chart A, k1] twice); work Chart A**; rep from * to ** 3 times; end work Chart B; work Chart A; k2. **3rd Size:** k2; work Chart A; *work Chart B; ([work Chart A, k1] twice); work Chart A**; rep from * to ** 5 times; end work Chart B; work Chart A; k2.

On Page 32, the repeat for Chart A should read, "3 sts."

Kilt Turtleneck

The following replaces the schematic on Page 44:



Kestrel Tam

Under **Gauge** on Page 51, use Chart B for the Kestrel Cardigan on Page 50 to knit the gauge swatch. When knitting the Tam itself, use Chart B for the Kestrel Tam on Page 53 as indicated.

Under **Finishing** on Page 52, in the first sentence, "Teal" should read "Stonewash."

Fiona Jacket

Under **Measurements** on Page 74 (and on the garment schematic on page 77), **Width at Underarm** should read: 20, (22, 24)", and **Sleeve Length** should read: 22 (22, 22 1/2)".

On Page 74, the **Foundation Row with Bobble Edge** should read: P5, *(Make Bobble (MB) thus: [p1, k1, p1] in same st; turn; k1, p1, k1; turn; k1, p1, k1; pass 2nd st over 3rd st, then 1st st over 3rd st, completing bobble); p4, k1, p4**; rep from * to **; end MB, p5.

Instructions for **Left Front up to Armhole** and **Neck Shaping** should read:

With US 6, CO 51 (55, 61) sts.

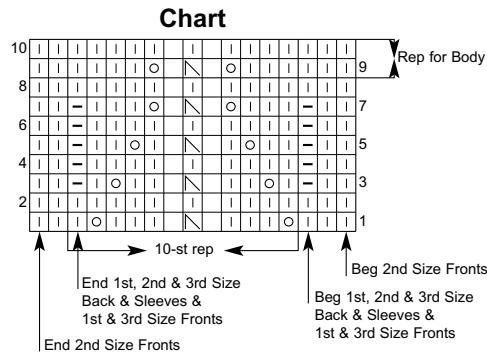
Foundation Row with Bobble Edge (WS): P5 (7, 5), *(Make Bobble (MB) thus: [p1, k1, p1] in same st; turn; k1, p1, k1; turn; k1, p1, k1; pass 2nd st over 3rd st, then 1st st over 3rd st, completing bobble); p4, k1, p4**; rep from * to **; end MB, p5 (7, 5).

Row 1 (RS): Reading from right to left, work Row 1 of Chart.

Row 2 (WS): Reading from left to right, work Row 2 of Chart.

Continuing as set, work the 10 rows of Chart twice, then rep Rows 9 and 10 until piece measures 11 (11 1/2, 11 1/2)" from CO edge, ending with RS facing for next row.

The following replaces the Chart on Page 77:



Sumburgh Hooded Pullover

Under "Finishing" on Page 65, instructions for sewing down placket should read, "Sew placket down (for Men, **Left Front** overlaps **Right Front**; for Women, **Right Front** overlaps **Left Front**)."

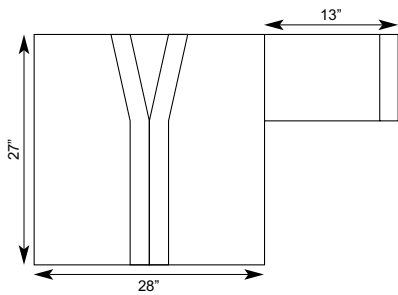
Diagonal Kimono

Under **Materials** on Page 66 for Version II, the number of skeins of Slate (125) should be 7 and Granite (122) should be 5.

On Page 68, the first paragraph should read:

Rep these two rows, maintaining Stripe Sequence for Back and Front, until piece measures **approx. 27"** from CO edge, and **Stripe Sequence is positioned as given**, ending with RS facing for next row.

The following replaces the schematic on Page 70:



The following replaces the **Stripe Sequence for Back and Front** for Version II.

Version 2 - Stripe Sequence for Back and Front	
Rows	Color
28	Slate (125) (Includes CO & 1st row)
2	Granite (122)
20	Slate
2	Granite
12	Slate
2	Granite
6	Slate
2	Granite
2	Slate
2	Granite
2	Slate
2	Foxglove (273)
([2	Slate, 2 rows Granite] 6 times)
2	Slate
2	Cinnamon (576)
([2	Slate, 2 rows Granite] 6 times)
2	Slate
2	Foxglove
([2	Slate, 2 rows Granite] 6 times)
2	Slate
2	Cinnamon
([2	Slate, 2 rows Granite] 6 times)
2	Slate
2	Foxglove
([2	Slate, 2 rows Granite] 4 times)
Beg Shoulder Dec	
([2	Slate, 2 rows Granite] 2 times)
2	Slate
2	Cinnamon
([2	Slate, 2 rows Granite] to end)

Winter Sunset Cardigan

On Page 78, **Rnd 1** should read:

Rnd 1: Work 5 steek sts; slip marker; work Row 1 of Chart A1 to last 2 sts; work sts 1-2 of Chart A1; slip marker; work 5 steek sts.

On Page 78, **Next Rnd (before Armhole Steek)** should read:

Next Rnd: Change to US 3 and work rnds as follows: rep 32 sts of Chart B to last st; end work st 1 of Chart B. Work 48 rows of Chart B twice, then work rnds 1-5 (1-14, 1-22).

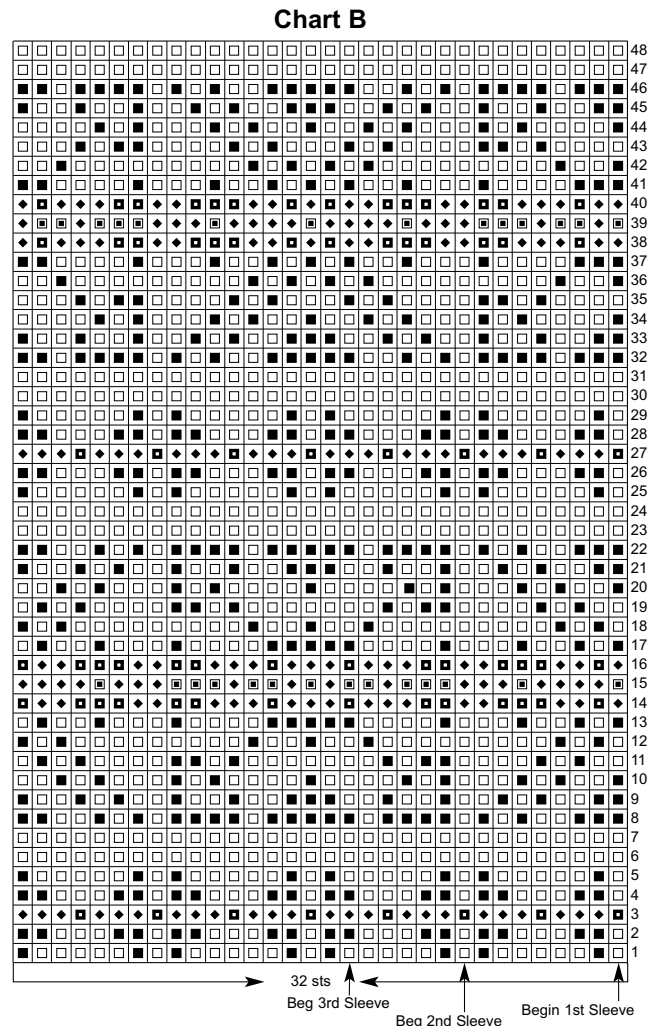
On Page 78, the first paragraph of **Armhole Steek** should read:

Armhole Steek

Work in pattern across 88 (96, 104) sts; place next st on safety pin; place marker; CO 10 sts for armhole steek; place marker, work in pattern across 176 (192, 208) sts; place next st on safety pin; place marker; CO 10 sts for armhole steek; work in pattern across 87 (95, 103) sts.

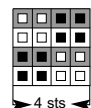
On Page 80, the paragraph following the heading "**Shape Sleeve**" should begin "Working Chart B as set..."

Due to errors on lines 15 and 19 of Chart B, the following replaces Chart B on page 81.



The following replace Charts A1 and A2 in their entirety on Page 81.

Chart A1



Note on Chart A1: With the color indicated, purl the sts in the shaded rows and knit the sts in the white rows.

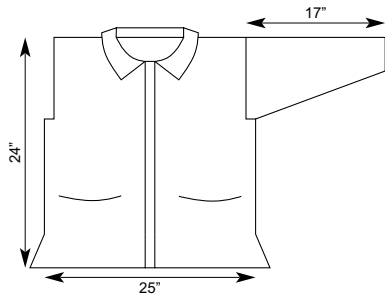
Chart A2



Note on Chart A2: With the color indicated, knit the sts on both the right side and wrong side rows.

Swing Jacket

The following replaces the schematic on Page 90.



Jamieson's Shetland Knitting Book - 2nd Printing

Errata - January 29, 2004

Wrixlan Jacket

On Page 14, the 2nd paragraph should read:

Complete Dec and End Cables B, C and D

Next Row (WS): Continuing Charts A and E as set, work Chart E over the first 6 sts, k2; purl to last 8 sts, dec'g 1 st in center of each occurrence of Chart B; k2, work Chart A over the last 6 sts (214 (306) sts rem).

St. Ninnian

On Page 28, **Row 2** for the **1st and 3rd Sizes** should read: **1st Size:** k2; work Chart A; *work Chart B; ([work Chart A, k1] twice); work Chart A**; rep from * to ** 3 times; end work Chart B; work Chart A; k2. **3rd Size:** k2; work Chart A; *work Chart B; ([work Chart A, k1] twice); work Chart A**; rep from * to ** 5 times; end work Chart B; work Chart A; k2.

On Page 32, the repeat for Chart A should read, "3 sts."

Fiona Jacket

On Page 74, the **Foundation Row with Bobble Edge** should read: P5, *(Make Bobble (MB) thus: [p1, k1, p1] in same st; turn; k1, p1, k1; turn; k1, p1, k1; pass 2nd st over 3rd st, then 1st st over 3rd st, completing bobble); p4, k1, p4**; rep from * to **; end MB, p5.

Instructions for **Left Front up to Armhole and Neck Shaping** should read:

With US 6, CO 51 (55, 61) sts.

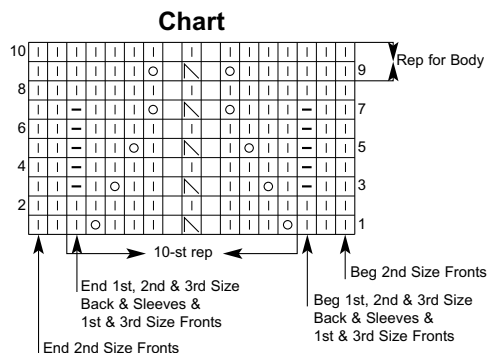
Foundation Row with Bobble Edge (WS): P5 (7, 5), *(Make Bobble (MB) thus: [p1, k1, p1] in same st; turn; k1, p1, k1; turn; k1, p1, k1; pass 2nd st over 3rd st, then 1st st over 3rd st, completing bobble); p4, k1, p4**; rep from * to **; end MB, p5 (7, 5).

Row 1 (RS): Reading from right to left, work Row 1 of Chart.

Row 2 (WS): Reading from left to right, work Row 2 of Chart.

Continuing as set, work the 10 rows of Chart twice, then rep Rows 9 and 10 until piece measures 11 (11½, 11½)" from CO edge, ending with RS facing for next row.

The following replaces the Chart on Page 77:

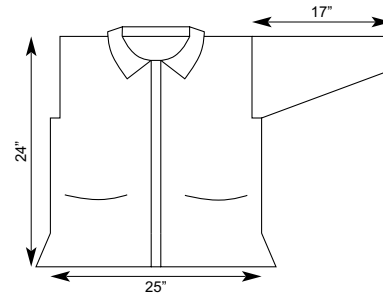


Winter Sunset Cardigan

On Page 80, the paragraph following the heading "Shape Sleeve" should begin "Working Chart B as set..."

Swing Jacket

The following replaces the schematic on Page 90.



**Jamieson's Shetland Knitting Book - 3rd Printing
Errata - January 29, 2004**

St. Ninnian

On Page 28, **Row 2** for the **1st and 3rd Sizes** should read: **1st Size:** k2; work Chart A; *work Chart B; ([work Chart A, k1] twice); work Chart A**; rep from * to ** 3 times; end work Chart B; work Chart A; k2. **3rd Size:** k2; work Chart A; *work Chart B; ([work Chart A, k1] twice); work Chart A**; rep from * to ** 5 times; end work Chart B; work Chart A; k2.

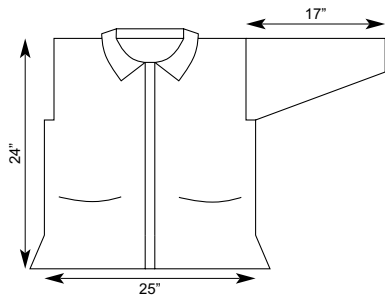
On Page 32, the repeat for Chart A should read, "3 sts."

Winter Sunset Cardigan

On Page 80, the paragraph following the heading "**Shape Sleeve**" should begin "Working Chart B as set..."

Swing Jacket

The following replaces the schematic on Page 90.



Jamieson's Shetland Knitting Book - 4th Printing
Errata - January 29, 2004

Winter Sunset Cardigan

On Page 80, the paragraph following the heading "Shape Sleeve" should begin "Working Chart B as set..."